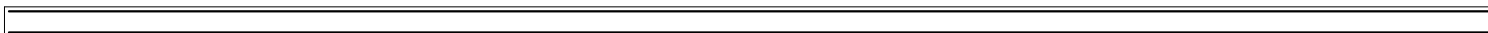


PLANTA DE FORMA
ESC. 1:50

2 N4 Ø12.5mm C=994

994



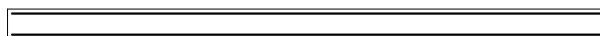
2 N3 Ø12.5mm C=994

994

V1=V2
ESC. 1:50

2 N7 Ø12.5mm C=394

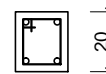
394



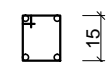
2 N6 Ø12.5mm C=394

394

V3=V4=V5=V6=V7=V8
ESC. 1:50



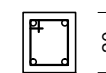
15



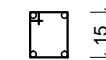
10

24 N8 Ø6.3mm C=60
e=15cm

ESC. 1:25



15



10

67 N5 Ø6.3mm C=60
e=15cm

ESC. 1:25

PROJETO EXECUTIVO

EDIFICACAO	ÁREA CONSTRUIDA :	40,00M²
	PROPRIETARIO:	PREFEITURA MUNICIPAL DE SÃO JOÃO DO PARAISO MONICA CRISTINE MENDES DE SOUSA - PREFEITA MUNICIPAL
PROJETO	RT:	MARCOS ALVES CAMARGO JUNIOR CREA: 194932/D - MG
	TITULO	PROJETO ESTRUTURAL
	USO	INFRAESTRUTURA
	END. OBRA:	COMUNIDADE DE BAIXA GRANDE - SÃO JOÃO DO PARAISO
	DETALHE	PLANTA DE FORMA E DETALHAMENTO DE VIGAS.
	DATA	MARÇO 2020
	FOLHA	01 02